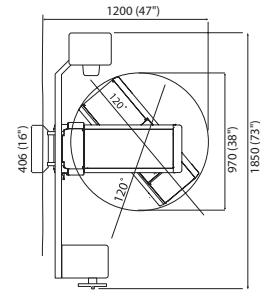
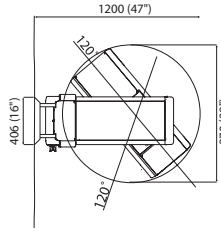
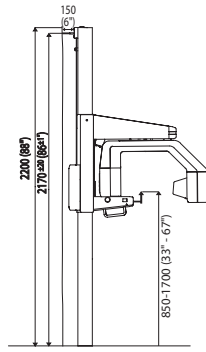


# CRANEX PRODUCT FAMILY

## TECHNICAL DATA

- CRANEX EXCEL
- CRANEX EXCEL CEPH
- CRANEX BASEX
- CRANEX EXCEL D
- CRANEX BASEX D

### MAIN DIMENSIONS



CEPHALOMETRIC UNIT

### GENERAL

GENERATOR	High frequency DC generator, operating frequency 40 kHz
X-RAY TUBE	OPX 105 or equal
FOCAL SPOT SIZE	0.5 mm, IEC 336
MINIMUM TOTAL FILTRATION	2.5 mm Al
ANODE VOLTAGE	63 - 81 kV
ANODE CURRENT	6 mA and 10 mA (4.5 mA and 7.5 mA in compensation mode)
EXPOSURE TIME	19/16 s (50/60 Hz) panoramic 0.4 - 3.2 s cephalometric
SID	520 mm panoramic 1635 - 1700 mm cephalometric
LINE VOLTAGE	230/240 Vac $\pm$ 10% (50/60 HZ)
FUSING	8 A slow
WEIGHT	150 kg (331 lbs) panoramic 195 kg (430 lbs) cephalometric
COLOUR	RAL 7035 and 9003
ELECTRICAL SAFETY CLASSIFICATION	IEC 601-1 class 1/B (UL listed)

### FILM UNITS

CASSETTE SIZES	15 x 30 cm (optionally 24 x 30 cm/10 x 12") panoramic 18 x 24 cm (8 x 10") cephalometric Optionally 24 x 30 cm (10 x 12") cephalometric
----------------	---

### DIGITAL UNITS

CCD SENSOR	PDC
ACTIVE SENSOR SURFACE	147.5 x 6.1 mm
PIXEL SIZE	0.096 mm
FILE SIZE	Approximately 4.2 MB per full panoramic image
APPLICATION SOFTWARE	DIGORA® for Windows® 2.1

### COMPUTER REQUIREMENTS

	MINIMUM	RECOMMENDED
OPERATING SYSTEM	Windows® NT 4.0 or 2000	
CPU	Pentium II 233 MHz	Pentium III
RAM	128 MB	256 MB
HDD	10 GB	> 20 GB
VIDEO RAM	4 MB of video memory	16 MB of video memory
NETWORK	100 Base-TX x2	10/100 Mbit/s, Base T x2 or two (2) equivalent network interface cards
DISPLAY	17" CRT or 14" TFT LCD True Color CD-Rom Drive	19" CRT or 17" TFT-LCD, 1280x1024 pixels, True Color CD-RW Drive
BACK-UP STORAGE	SCSI tape drive	MO disk

Subject to change without notice  
8200927  
02/02



**Head office:**  
P.O.Box 250, 00031 Helsinki, FINLAND  
Phone: +358 10 394 820, Fax: +358 9 701 5261

**Subsidiary, Soredex Inc.**  
1765 West Oak Parkway, Suite 500, Marietta, GA 30062, U.S.A.  
Phone: +1 770 226 0500, 1 800 235-8854, Fax: +1 770 226 0511



ISO 9001

WWW.SOREDEX.COM / WWW.SOREDEXUSA.COM

DIGORA® is a trademark of SOREDEX Instrumentarium Corporation. Windows® is a trademark of Microsoft Corporation.