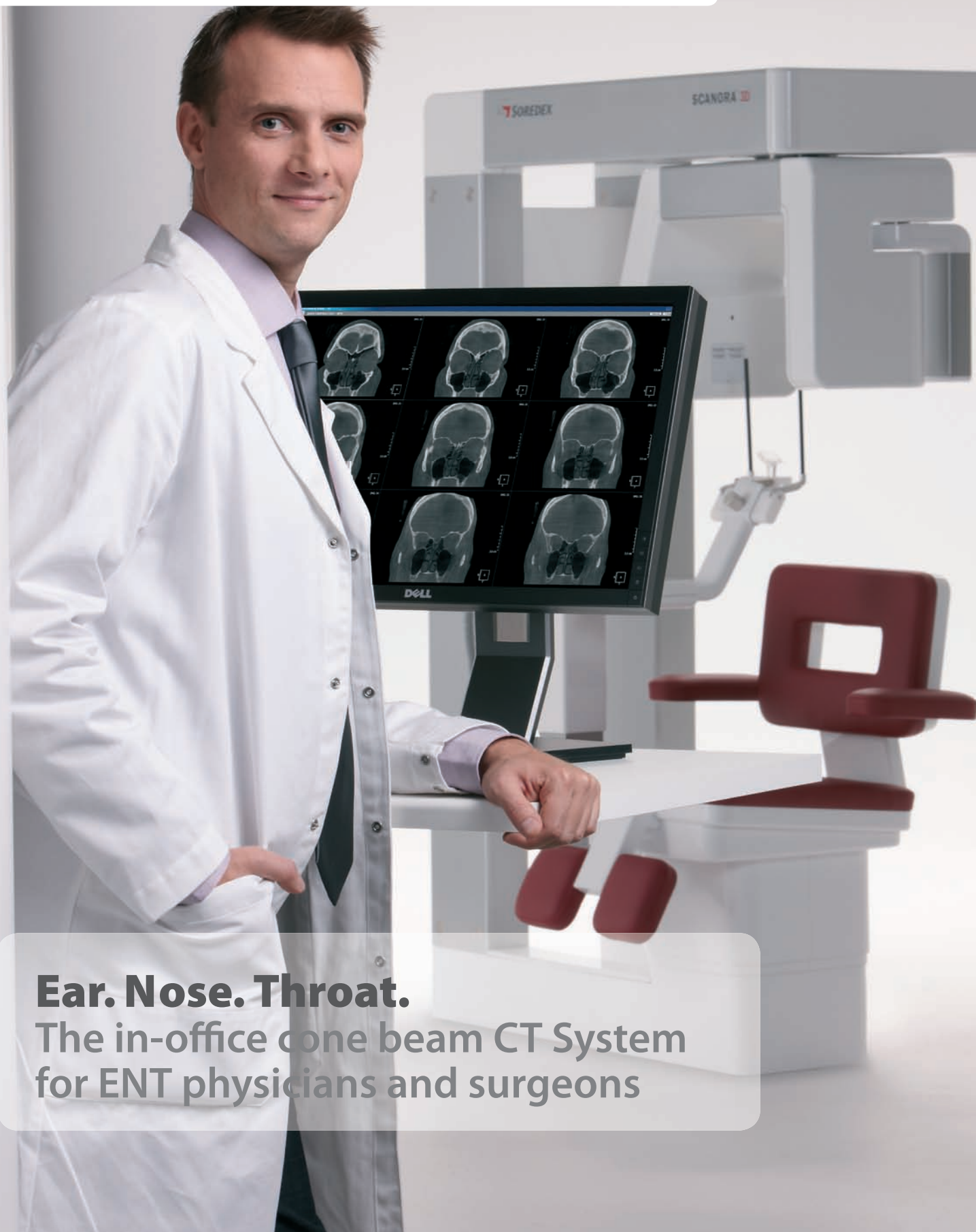


SOREDEX

SCANORA[®] 3D

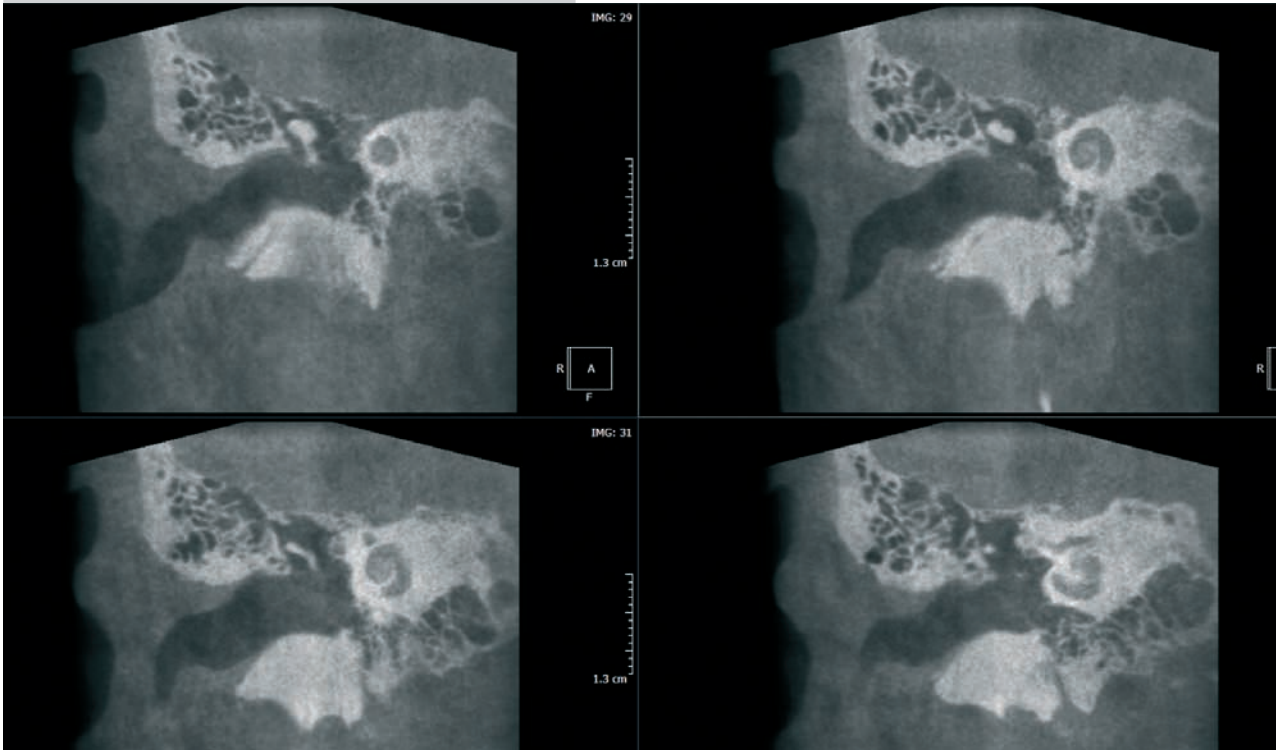
for ENT



Ear. Nose. Throat.

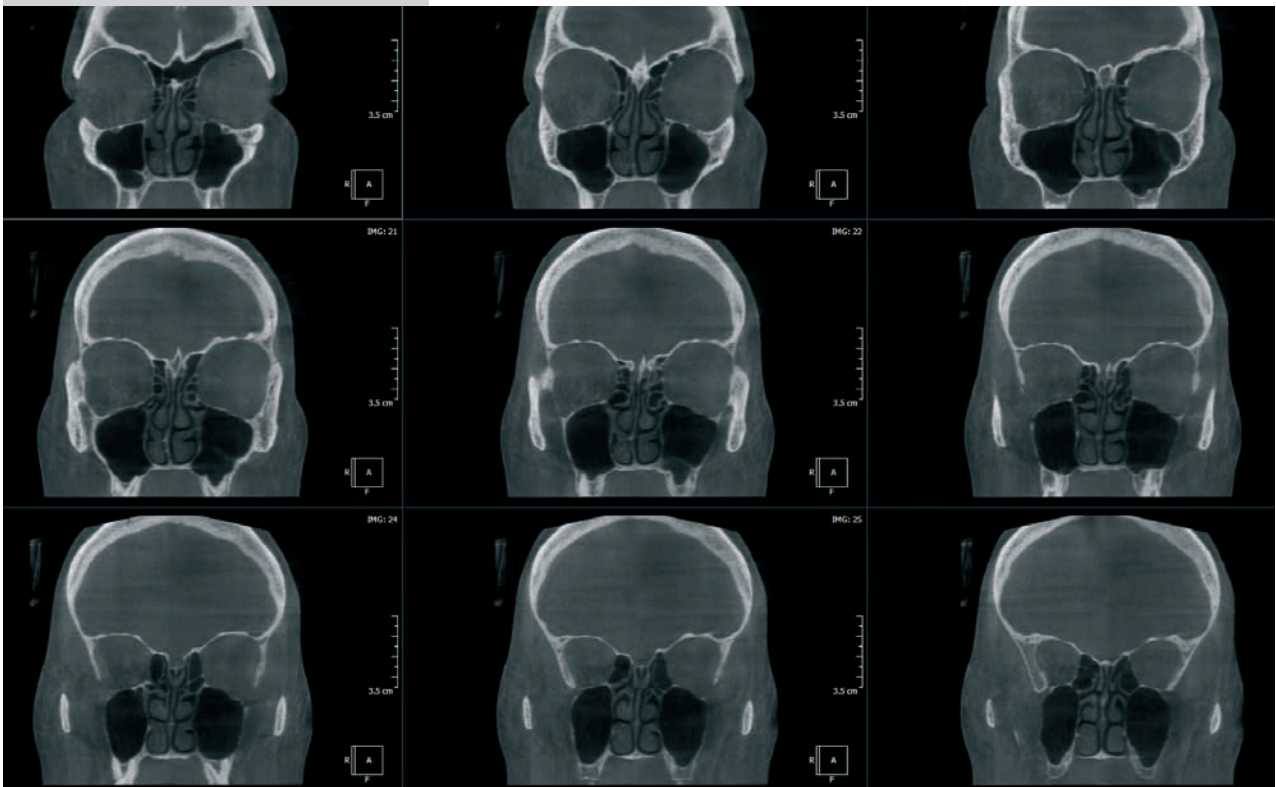
The in-office cone beam CT System
for ENT physicians and surgeons

Ear/Temporal Studies



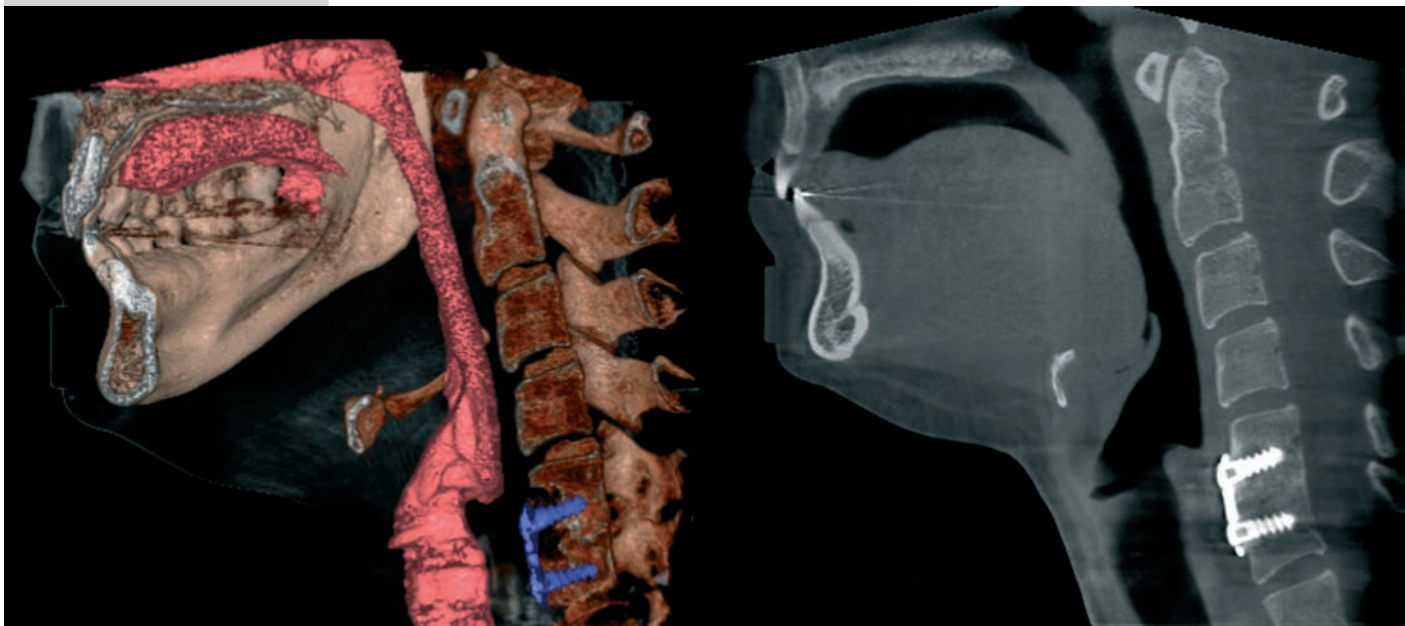
Software tools allow the operator to further enhance the diagnostic capabilities.

Nose/Sinus



With the software you can view coronal, axial, and sagittal views with slice thickness and spacing that you have been looking at in your conventional CT scans.

Throat



Powerful 3D visualization features in the software allow you to see air passages and bony structures side by side with CT images.



System highlights

- Stable seated patient
- Fully motorized chair
- 90 kV, 4 - 12,5 mA, pulsed X-ray generation
- Scan time 10 to 26 s
- Reconstruction time shorter than 1 minute*
- Isotropic voxel size ranging from 0.133 to 0.35 mm
- 12" HD ClearTouch Panel
- Compatible with leading Navigation Systems
- DICOM / PACS compatibility
- Small footprint 2.24 m²

* Total image processing time 1 to 4 minutes depending on PC hardware

Low dose performance

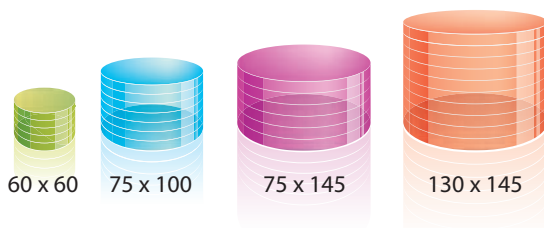
Performance ALARA*

Building on the ALARA* principle, the diagnostic performance and the low dose are achieved by pairing pulsed radiation and half beam technology.

ALARA* = As Low As Reasonably Achievable

Freedom of movement

Four adjustable Fields of View ranging from 60 x 60 mm to 130 x 145 mm provide the view for each task in the entire Head & Neck area.



Speed and stability

Short scan times from 10 to 26 seconds and effective exposure times from 2.25 to 6 seconds have the benefits of saving patient dose. Together with the integrated motorized seat and the rigid patient support, they increase the patient comfort and the diagnostic performance of the SCANORA® 3D system.

DOSE COMPARISON

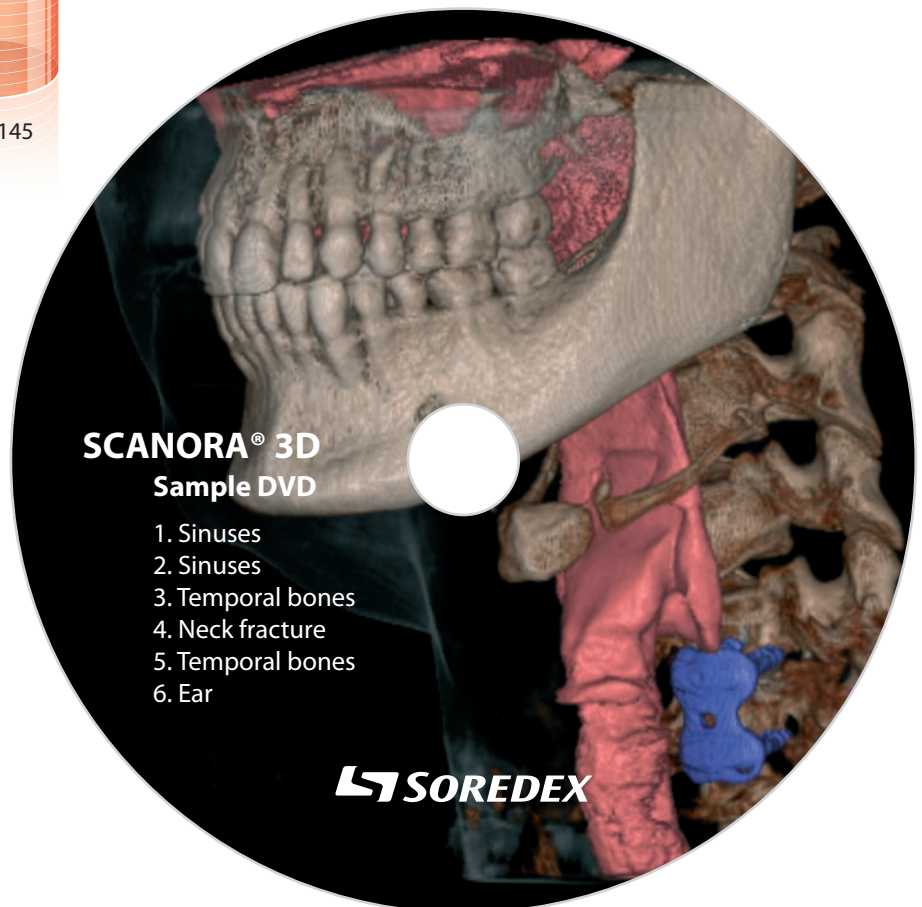
SCANORA® 3D



AVERAGE CBCT



MEDICAL CT



Technical data

3D Imaging fields-of-view and specifications

| FOV [Height x diameter] | Resolution | Voxel size [mm] | Scan/ Exposure time [s] | Total image processing time approx. [minutes] |
|--------------------------------|------------|--------------------|----------------------------|--|
| 3D Small 6x6 cm | Standard | 0.20 | 13 / 3 | 1 |
| | High | 0.133 | 20 / 4.5 | 2 |
| 3D Medium 7.5x10 cm | Standard | 0.30 | 11 / 2.5 | 1 |
| | High | 0.20 | 16 / 3.75 | 2 |
| 3D Large 7.5x14.5 cm | Standard | 0.35 | 10 / 2.25 | 1 |
| | High | 0.25 | 13/3 | 2 |
| 3D XL 13x14.5 cm | Standard | 0.35 | 20 / 4.5 | 2 |
| | High | 0.25 | 26 / 6 | 4 |

3D image receptor

| | |
|----------------------|-----------------|
| Receptor type | CMOS Flat Panel |
| Receptor active area | 124 mm x 124 mm |
| Pixel size | 200 µm |

Panoramic image receptor (Optional)

| | |
|-----------------------|---------------|
| Technology | CCD |
| Detector size (H x W) | 146 mm x 6 mm |
| Detector pixel size | 48 µm |

Panoramic imaging programs (Optional)

| | |
|-----------------------------|--|
| Adult panoramic program | |
| Pediatric panoramic program | |
| TMJ programs | |

X-ray generator

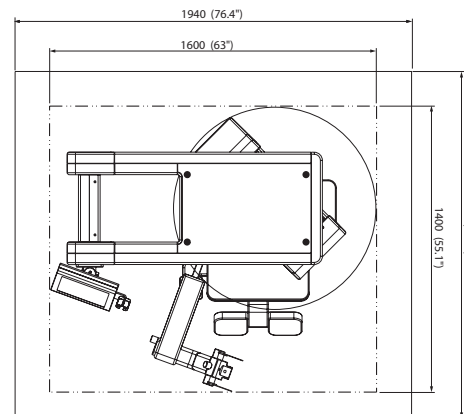
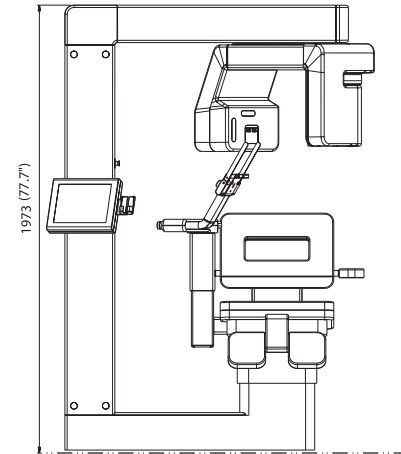
| | |
|--------------|------------------|
| Tube | Fixed anode tube |
| Focal spot | 0.5 mm IEC 60336 |
| Target angle | 5 degrees |
| kV | 60-90 |
| Average mA | 1.0-8.0 |

General

| | |
|--------------------|---|
| Weight | 310 kg (690 lbs) |
| Dimensions (HxWxD) | 1973 mm x 1600 mm x 1400 mm (77.7" x 63" x 55.1") |

Power requirements

| | |
|--------------|----------------------------------|
| Line voltage | 230-240 VAC (±10 %), 50/60 Hz |
|--------------|----------------------------------|

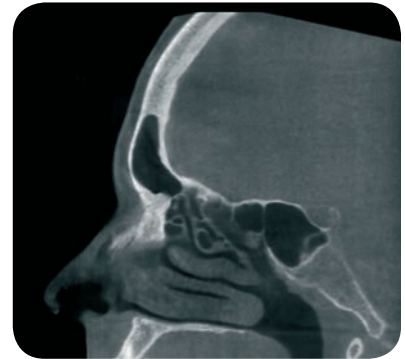
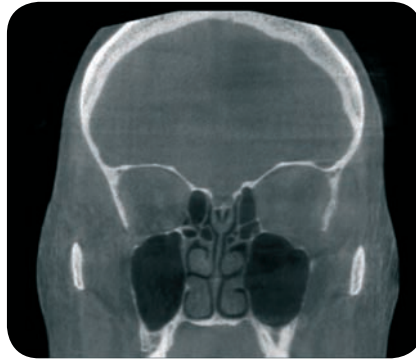
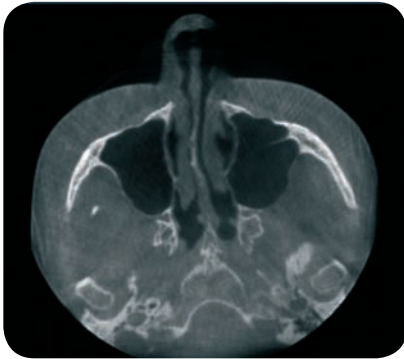


The SCANORA® Workstation software is the main platform, including the local patient image database and panoramic image handling. 3D visualization software provides 3D image handling and diagnostics. This system forms an effective means for solving diagnostic problems, planning surgical procedures and making patient education and case acceptance.

Freely distribute clinical cases on CD to referring clinicians. The referring clinician can utilize the free viewer without investing in special software or import the images in DICOM format into their own 3D software or Navigation System.

In addition to the standard 3D visualization software that comes with the unit, most other software offerings supporting the DICOM format can also be used. The system is open and flexible and offers you the possibility to selectively take advantage of most third party diagnostic and navigation applications, now and in the future.

DIGITAL IMAGING MADE EASY™



Head Office and Factory: SOREDEX

Nahkelantie 160, Tuusula
P.O. Box 148, FI-04301 Tuusula
Finland
Tel. +358 10 270 2000
Fax +358 9 701 5261
info@soredex.com

Subsidiary: SOREDEX USA

1245 W. Canal Street
Milwaukee, WI 53233 U.S.A.
Tel. +1 800 558 6120
Fax +1 414 481 8665
usainfo@soredex.com

Subsidiary: SOREDEX Germany

Schutterstrasse 12
77746 Schutterwald
Germany
Tel: +49 (0) 781 28 41 98 0
Fax: +49 (0) 781 28 41 98 30
kontakt@soredex.de

Pride. Passion. Performance.

Since 1977 SOREDEX® has been a leader in providing innovative imaging solutions for demanding professionals. Through continuous evolution and refinement we have set the highest industry standards for Quality, Reliability and Efficiency.

We are committed to follow in this path today and in the future.

MINRAY®, CRANEX®, DIGORA® and SCANORA® are registered trademarks of SOREDEX, PaloDEx Group Oy. Other product names and trademarks are the property of their respective owners. CE marked (NB 0537). Electric safety according to IEC 60601-1. Manufacturing complies with ISO 13485:2003, ISO 9001:2008 and ISO 14001:2004.

SOREDEX® reserves the right to make changes to specifications and features shown herein at any time without notice or obligation. Contact your SOREDEX® representative for the most current information.

© 2011 SOREDEX®

206763-1 02/11 Printed in Finland



www.soredex.com • www.soredex.de • www.soredexusa.com